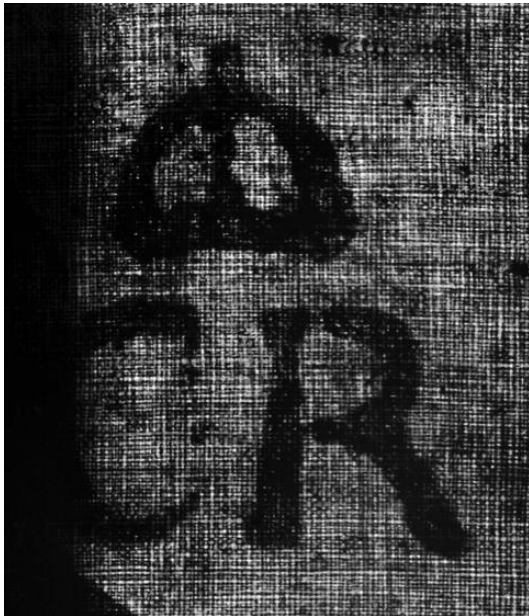




AA&R Helps Find Several Paintings from Collection of Charles I

The latest must-see exhibition to open in London this year has to be [*Charles I: King and Collector*](#) at the Royal Academy. For the first time since the 17th century, many works from the legendary art collection amassed by Charles I have been reunited in one place. After Charles's execution in 1649, the collection was sold off and dispersed throughout Europe. Some works were later re-purchased, others found homes in other famed collections, while many others have been lost and forgotten. Over the years AA&R has been asked to help detect a number of these orphaned paintings, using methods of scientific analysis.



Collection marks help to tie paintings to specific owners and places. A key feature of the Charles I collection is a mark that was applied to the back of the canvas, a stencilled black 'CR,' surmounted by a crown. These marks commonly became covered up by later restoration, when a new canvas was applied to support the deteriorating original fabric. However, they are not lost, they are simply hidden in the middle of a sandwich. By using high-resolution digital infrared imaging to look through the entire painting structure, we can detect these missing marks,

Inclusion in the collection of an historically significant figure, like Charles I, does have significant positive impact on a painting's value. If you believe that a piece you own may have once belonged to this royal collector, contact us to learn how we can verify with a quick and cost-effective scan.